



COMUNE DI ROSOLINI
LIBERO CONSORZIO COMUNALE DI SIRACUSA
Via Roma, 2 - 96019 Rosolini (SR)

Progetto Definitivo

Programma Operativo Complementare "Legalità" 2014-2020.
Interventi di sorveglianza tecnologica del territorio nelle Regioni Basilicata, Calabria, Campania, Puglia e Sicilia
Asse 2 "Rafforzare le condizioni di legalità per lo sviluppo economico dei territori delle Regioni target".

PROGETTO "ROSOLINI SICURA"

SCHEDE TECNICHE APPARATI	TAVOLA 14	IDENTIF. STA
	SCALA -	DATA

Il Responsabile del procedimento



IL COMANDANTE di P.M.
Salvatore Latino

Il progettista



geom. ESTEFANZA

Collaboratori

HikCentral Professional

HikCentral Professional is a software platform provided by Hikvision for integrating and managing security systems. It is designed to meet a variety of security challenges on a single platform. With HikCentral Professional, you can manage multiple individual systems with ease, such as video security, access control, security alarms, and more, as well as explore cross-system functionalities. Daily operations become more efficient while protection of people and property improve all around. Users of all kinds are making smarter decisions.



Key Feature

Light and Efficient

- Lightweight architecture features reduced consumption of system resources
- Capable of managing multiple systems of varying sizes with consistent efficiency

Unified and Flexible

- Supports combining various application plug-ins under a unified, on-demand architecture for collaboration across business segments
- New plug-ins can be continuously developed to meet new business needs

Integrated and Open

- Compatible with virtually all Hikvision products and their abundance of applications, including deep-learning-based analytics and statistics
- Open architecture permits easy integration with third-party systems and hardware



• Features of Main Modules

Module	Features
Video	<ul style="list-style-type: none"> ● Efficient and comprehensive video surveillance ● Quick incident search and location, convenient event search, and quick run-through of video ● Video export as evidence ● Low bandwidth network adaptability ● Reliable and flexible storage
Access Control	<ul style="list-style-type: none"> ● Comprehensive and flexible access management methods ● Advanced access strategies for sensitive areas ● Convenient employee badge design and printing ● Clear step-by-step guidance ● Remote personnel registration ● Automatically lock or unlock doors ● Keep doors in a remain unlocked status during an emergency ● Easily count and verify everyone's safety
Visitor	<ul style="list-style-type: none"> ● Digitalized visitor management ● Visitor registration in advance ● Pre-defined access permissions and traceable records ● A Watchlist function along with personalized design and printing of badges
Vehicle	<ul style="list-style-type: none"> ● Flexible and efficient entrance & exit management ● Improved parking experience for drivers ● Self-service parking query ● Flexible billing ● Intuitive and efficient parking operation analysis and transaction analysis reports
Mobile Monitoring	<ul style="list-style-type: none"> ● Efficient vehicle monitoring for quick response ● Reliable archive management ● Customized reports for enhanced operational efficiency
Alarm Detection	<ul style="list-style-type: none"> ● Centrally manage various alarm sources ● Real-time display of all kinds of alarms ● Flexible linkage ● Automatic audio alarms
Intelligent Analysis	<ul style="list-style-type: none"> ● The video-based intelligent analysis dashboard enables flexible and extensible digital applications ● Smart commercial analyses
Digital signage	<ul style="list-style-type: none"> ● Manage and configure content for digital signage in an intuitive manner ● Pre-installed program templates ● All programs are created visually
Time & Attendance	<ul style="list-style-type: none"> ● Flexible attendance rule-setting ● Diverse attendance reports and customizable templates ● Easy integration with third-party payroll systems
Maintenance	<ul style="list-style-type: none"> ● Visualized network and device topology and alarm notifications ● Logs are available for event trackback and evidence

Software Specification

The following table shows the maximum performance of the SYS (System Management Server). For other detailed data and performance, refer to *Software Requirements and Performance*.

Features		Maximum Performance
General		
Manageable Resource	Managed Devices <i>*Including Encoding Devices, Access Control Devices, Elevator Control Devices, Security Control Devices, Digital Signage Terminals, Interactive Flat Panels, Remote Sites, Guidance Terminals, and IP Speakers</i>	2,048
	Encoding Devices Supporting ONVIF Protocol	2,048
	Video Intercom Devices	5,000
	Guidance Screens	512
	Visitor Terminals	32
	Dock Stations	1,500
	Network Transmission Devices	128
	Mobile Devices	1,000
	Fire Protection Devices	2,048
	Entrance/Exit Stations	40
	Query Terminals	16
	DeepinMind Server	64
	Recording Servers	64
	Streaming Servers	64
	Cameras	10,000 With RSM: 100,000
	Maximum Number of Fisheye Cameras	10,000
	Maximum Number of Cameras for People Counting	10,000
	Alarm Inputs	5,000
	Alarm Outputs	3,000
	Security Radars and Radar PTZ Cameras	30
	Zones of Security Control Partitions	2,048
	Security Control Partitions (Areas)	256
	DS-5600 Series Face Recognition Terminals When Applied with Hikvision Turnstiles	32
	ANPR Cameras	3,000
	People Counting Cameras	Recommended: 300
	Heat Map Cameras	Recommended: 70
	Thermal Cameras	Recommended: 20 ^①
	Queue Management Cameras	Recommended: 300
	Cameras per Area	256
	Alarm Inputs per Area	
	Alarm Outputs per Area	
Event & Alarm	Event and Alarm Rules	10,000
	Storage of Events or Alarms Without Pictures	1,000/s
	Storage of Events or Alarms with Pictures	20/s (Stored in SYS) 80/s (Stored in Recording Server)
	Events or Alarms Sent to Clients <i>*The clients include Web Client, Control Clients and Mobile Clients.</i>	120/s 100 Clients/s
	Combined Alarm	10/s
	User-Defined Events	10,000
User and Role	Concurrent Accesses via Web Clients and Control Clients	100
	Concurrent Accesses via Mobile Clients	100

	Users	3,000
	Roles	3,000
	Users for Double Authentications	50
Person	Person Group	3,000
	Person Group Hierarchies	10
	Size of a Profile Picture	300 KB
	Total Size of Profile Pictures	300 GB
Data Storage	Data Retention Period	Stored for 3 Years
	People Counting	5 million each year
	Heat Map	0.25 million each year
	ANPR Records	60 million each year
	Events	
	Alarms	
	Access Records	1.4 billion each year
	Attendance Records	55 million each year
	Visitor Records	10 million each year
	Operation Logs	5 million each year
	Service Information Logs	
	Service Error Logs	
Report	Recording Tags	60 million each year
	Scheduled Report Rules of Event and Alarm	100
	Event or Alarm Rules in One Event/Alarm Report Rule	32
	Records in One Sent Report	10,000 or 10 MB
	Resources Selected in One Report <i>*With this limitation, you can generate a neat and clear report via the Control Client and it costs less time.</i>	32
	Maximum Number of Stores	1,000
Video & Intelligent Analysis		
Recording	Recording Schedule	30,000
	Recording Schedule Template	200
Face Comparison	Face Pictures for Comparison	1,000,000
	Face Comparison Groups	64
	Persons in One Face Comparison Group	1,000,000
	Storage of Face Comparison Events Without Pictures	1,000/s
	Storage of Face Comparison Events with Pictures	100/s (Stored in Recording Server)
Intelligent Recognition	Intelligent Analysis Groups	1,000
	Resources in One Group	64
	Persons for Intelligent Recognition	1000,000
Evidence Management	Evidences	100,000
	Evidence Files	5,000,000
Smart Wall	Decoding Devices	32
	Smart Walls	32
	Views	1,000
	View Groups	100
	Views in One View Group	10
	Cameras in One View	256
	Cameras in One Window of Auto-Switch	20
	Windows of an Auto-Switch	16
	View Group of an Auto-Switch	1
Streaming Server	Video Input Bandwidth per Streaming Server	200 × 2 Mbps
	Video Output Bandwidth per Streaming Server	200 × 2 Mbps
Access Control & Time and Attendance & Visitor		
Access Control	Persons with Credentials for Access Control	50,000
	Total Credentials (Card + Fingerprint)	250,000
	Cards	250,000
	Fingerprints	200,000

	Irises	100,000
	Profiles	50,000
	Access Points (Doors + Floors)	1,024
	Access Levels	512
	Access Schedules	32
	Templates for Card Printing	32
Time and Attendance	Persons for Time and Attendance	10,000
	Shift Schedules	128
	Major Leave Types	64
	Minor Leave Types of One Major Type	128
	Holidays	32
	Break Timetable	128
	Custom Rules for T&A Status on Device	128
Visitor Management	Visitors	100,000
	Visitor Check-In or Reservation Records	100,000
	Visitor Email Templates	20
	Entities in Watch List	10,000
Vehicle and Parking Management		
Vehicles per List		5,000
Vehicles		500,000
Custom Vehicle Types		10
Under Vehicle Surveillance Systems (UVSSs)		4
Vehicle Undercarriage Pictures		3,000
Storage of ANPR Alarm Without Pictures		1,000/s
Storage of ANPR Alarm with Picture		20/s (Stored in SYS) 100/s (Stored in Recording Server)
Parking Lots		10
Lanes		Total: 40 In One Parking Lot: 32
Parking Spaces		Total: 3,000 In One Floor: 1,024
Floors in All Parking Lots		128
Cards Linked with Vehicles		250,000
Temporary Cards in One Parking Lot		10,000
Vehicle Passing Frequency in Each Lane		1 Vehicle/s
Mobile Monitoring		
Fence Rules for One Vehicle		4
Vehicles Can Be Located in One Client		64
Retention Period of GPS Data		6 Months
Retention Period of Statistics Data		3 Years
Maximum Number of Drivers		10,000
Maximum Number of Driving Routes		1,000
Digital Signage		
Materials		10,000
Programs		2,000
Schedules		1,000
Release Records		1,000
Video Walls		512
Applications for Interactive Flat Panel		1,000
Security Inspection		
Analyzers		8
Walk-Through Metal Detectors		64
Security Inspection Channels		1,000
Broadcast		
IP Speakers		2048
Speaker Unit		128

Broadcast Group	128
Media Libraries	100
Patrol	
Maximum Number of Shifts of a Single Route	8

①: This recommended value refers to the number of thermal cameras connected to the system directly. It depends on the maximum performance (data processing and storage) in the situation when the managed thermal cameras uploading temperature data to the system. For thermal cameras connected to the system via NVR, there is no such limitation.

System Requirement

** For high stability and good performance, the following system requirements must be met.*

OS for HikCentral Professional Server	Microsoft® Windows 11 64-bit Microsoft® Windows 10 64-bit Microsoft® Windows 8.1 64-bit Microsoft® Windows 7 SP1 64-bit Microsoft® Windows Server 2019 64-bit Microsoft® Windows Server 2016 64-bit Microsoft® Windows Server 2012 R2 64-bit Microsoft® Windows Server 2012 64-bit Microsoft® Windows Server 2008 R2 SP1 64-bit Microsoft® Windows Server 2022 <i>*For Windows 8.1 and Windows Server 2012 R2, make sure it is installed with the rollup (KB2919355) updated in April, 2014.</i>
OS for Control Client	Microsoft® Windows 11 64-bit Microsoft® Windows 10 64-bit Microsoft® Windows 8.1 64-bit Microsoft® Windows 7 SP1 64-bit Microsoft® Windows Server 2019 64-bit Microsoft® Windows Server 2016 64-bit Microsoft® Windows Server 2012 R2 64-bit Microsoft® Windows Server 2012 64-bit Microsoft® Windows Server 2008 R2 SP1 64-bit <i>*For Windows 8.1 and Windows Server 2012 R2, make sure it is installed with the rollup (KB2919355) updated in April, 2014.</i>
Browser Version	Google Chrome® 84 and above Firefox® 84 and above Safari® 11 and above Microsoft® Edge 89 and above Internet Explorer® 11 and above
Database	PostgreSQL V11.8
OS for Mobile Client	iOS 10.0 and above Android 6.0 and above
Virtual Machine	VMware® ESXi™ 6.x, ESXi™ 7.x Microsoft® Hyper-V with Windows Server 2012/2012 R2/2016 (64-bit) <i>*The Control Client cannot run on the virtual machine.</i> <i>*Refer to the Deployment Guide of HikCentral Professional on VMware Virtual Machines for how the streaming server running on the virtual machine.</i> <i>*Virtual server migration is not supported.</i>

Recommended Hardware Specification



Processor	Intel® Xeon® E-2124	
Memory	16G DDR4 DIMM slots, Supports UDIMM, up to 2666 MT/s, 64GB Max. Supports registered ECC	
Storage Controllers	Internal Controllers: SAS_H330 Software RAID: PERC S140 External HBAs: 12Gbps SAS HBA (non-RAID) Boot Optimized Storage Subsystem: 2x M.2 240GB (RAID 1 or No RAID), 1x M.2 240GB (No RAID Only)	
Drive Bays	1T 7.2K SATAx2	
Power Supplies	Single 250W (Bronze) power supply	
Dimensions	Form Factor: Rack (1U) Chassis Width: 434.00mm (17.08 in) Chassis Depth: 595.63mm (23.45 in) (3.5" HHD) Note: These dimensions do not include: bezel, redundant PSU	
Dimensions with Package (W × D × H)	750 mm × 614 mm × 259 mm (29.53" × 24.17" × 10.2")	
Net Weight	12.2 kg	
Weight with Package	18.5 kg	
Embedded NIC	2 x 1GbE LOM Network Interface Controller (NIC) ports	
Device Access	Front Ports: 1x USB 2.0, 1 x iDRAC micro USB 2.0 management port Rear Ports: 2 x USB 3.0, VGA, serial connector	
Embedded Management	iDRAC9 with Lifecycle Controller iDRAC Direct DRAC RESTful API with Redfish	
Integrations and Connections	Integrations: Microsoft® System Center VMware® vCenter™ BMC Truesight (available from BMC) Red Hat Ansible	Connections: Nagios Core & Nagios XI Micro Focus Operations Manager i (OMi) IBM Tivoli Netcool/OMNibus
Operating Systems	Certify XenServer Citrix® XenServer® Microsoft Windows Server® with Hyper-V Note: This model is installed with Microsoft Windows Server® 2016 multilingual operating system.	
Virtual Machines	VMware® ESXi	

Distributed by



HIKVISION®

Headquarters

No.555 Qianmo Road, Binjiang District,
Hangzhou 310051, China
T +86-571-8807-5998
overseasbusiness@hikvision.com

Hikvision USA
T +1-909-895-0400
sales.usa@hikvision.com

Hikvision Australia
T +61-2-8599-4233
salesau@hikvision.com

Hikvision India
T +91-22-28469900
sales@pramahikvision.com

Hikvision Canada
T +1-866-200-6690
sales.canada@hikvision.com

Hikvision Thailand
T +662-275-9949
sales.thailand@hikvision.com

Hikvision Europe
T +31-23-5542770
sales.eu@hikvision.com

Hikvision Italy
T +39-0438-6902
info.it@hikvision.com

Hikvision Brazil
T +55 11 3318-0050
Latam.support@hikvision.com

Hikvision Turkey
T +90 (216)521 7070- 7074
sales.tr@hikvision.com

Hikvision Malaysia
T +601-7652-2413
sales.my@hikvision.com

Hikvision UK & Ireland
T +01628-902140
sales.uk@hikvision.com

Hikvision South Africa
Tel: +27 (10) 0351172
sale.africa@hikvision.com

Hikvision France
T +33(0)1-85-330-450
info.fr@hikvision.com

Hikvision Kazakhstan
T +7-727-9730667
nikia.panfilov@hikvision.ru

Hikvision Vietnam
T +84-974270888
sales.vt@hikvision.com

Hikvision UAE
T +971-4-4432090
salesme@hikvision.com

Hikvision Singapore
T +65-6684-4718
sg@hikvision.com

Hikvision Spain
T +34-91-737-16-55
info.es@hikvision.com

Hikvision Tashkent
T +99-87-1238-9438
uzb@hikvision.ru

Hikvision Hong Kong
T +852-2151-1761
info.hk@hikvision.com

Hikvision Russia
T +7-495-669-67-99
saleru@hikvision.com

Hikvision Korea
T +82-(0)31-731-8817
sales.korea@hikvision.com

Hikvision Poland
T +48-22-460-01-50
info.pl@hikvision.com

Hikvision Indonesia
T +62-21-2933759
Sales.Indonesia@hikvision.com

Hikvision Colombia
sales.colombia@hikvision.com

TS-883XU-RP-E2124-8G

CPU	Intel® Xeon® E-2124 4-core 3.3 GHz processor (burst up to 4.3 GHz) Architecture: 64-bit
Encryption Acceleration	Yes · AES-NI
System Memory	8GB DDR4 ECC RAM (2 x 4GB)
Maximum Memory	64 GB (4 x 16 GB)
Memory Slot	4 x Long-DIMM DDR4 (For dual- or quad-DIMM configurations, you must use a pair of identical DDR4 modules.)
Flash Memory	4 GB (Dual boot OS protection)
Drive Bay	Hot-swappable 8 x 3.5-inch SATA 6 Gbps bays
Drive Compatibility	3.5-inch bays: 3.5-inch SATA hard disk drives 2.5-inch SATA hard disk drives 2.5-inch SATA solid state drives
10 Gigabit Ethernet Port	2 x 10GbE SFP+ SmartNIC ports
Gigabit Ethernet Port	4 x RJ45
PCIe Slot	4 Slot 1: PCIe Gen2 x4 (PCH) Slot 2: PCIe Gen3 x8 (CPU) Slot 3: PCIe Gen3 x4 (CPU) Slot 4: PCIe Gen3 x4 (CPU) Note: Slot 4 is preinstalled with a 10GbE network adapter
USB Port	2 x Type-C USB 3.1 Gen2 10Gbps 4 x Type-A USB 3.1 Gen2 10Gbps
LED Indicators	HDD 1-8, Status, LAN, Storage expansion port status
Buttons	Power, Reset
System Warning	Voice prompts
Form Factor	2U Rackmount
Dimensions (H x W x D)	88.3 x 482 x 562 mm 3.48 x 18.9 x 22.1 inch
Weight	10.99 kg
Power Supply Unit	300W (x2), 100-240V
Power Consumption (W)	In operation: 89.99 W
Fan	System: 2 x 6.0cm fan (12V DC)

Sound Level	42dB(A)
Operating Temperature & Relative Humidity	0 ~ 40°C (32°F ~ 104°F), 5 ~ 95% RH non-condensing, wet bulb: 27°C (80.6°F)
Security Slot	Kensington Security Slot

Note: Use only QNAP memory modules to maintain system performance and stability. For NAS devices with more than one memory slot, use QNAP modules with identical specifications. Warning: Using unsupported modules may degrade performance, cause errors, or prevent the operating system from starting.

* Sound Level Test Environment: Refer to ISO 7779; Maximum HDD loaded; Bystander Position; Average data from 1 meter in front of operating NAS.

Designs and specifications are subject to change without notice.

iDS-TCM203-A

2 MP ANPR Ultra-Low Light Bullet Camera

DARKFIGHTER



smart IPC

The ANPR series ultra-low light smart cameras are able to capture vehicle and recognize vehicle license plate of various countries and regions in dim light environment. It offers high resolution, 120dB WDR, Auto-iris, PoE, Defog, EIS, 3D DNR, etc., to meet a wide variety of applications.

- 1/1.8" Progressive Scan CMOS
- 1920 × 1080 @ 60fps 60HZ 50fps 50HZ
- Ultra-low light
- 120dB WDR
- IP67, IK10
- IR illuminator 850nm
- ANPR Capture rate > 99% (certain countries and regions)
- ANPR recognition rate > 98% (certain countries and regions)



Function Description

Vehicle Detection and LPR

- Support countries and regions of Mid-East, Africa, Asia-Pacific, America, Europe and Russian-speaking countries.
- In Europe and Russian-speaking regions, capture rate exceeds 99%, recognition rate exceeds 98%.

Smart

- Smart recording: support edge recording and dual-VCA
- Smart encoding: support low bit rate, low latency, ROI enhance encoding

Image

- 1920 × 1080 @60fps
- Support auto iris, DC-drive
- Support rotate mode, suitable for environment as corridor
- Support target cropping, details can be seen with low bandwidth
- Streaming smoothness setting for different requirements of image quality and fluency
- Support H.264+/H.264/MPEG4/MJPEG video compression, multi-level video quality configuration; support Baseline Profile/Main Profile/High Profile H.264 encoding complexity.
- Multiple OSD color: Black & white self-adaptive; Custom
- 120dB WDR is supportable for backlight environment
- Support defog, BLC, EIS, 3D DNR

System

- Support ONVIF (profile S/profile G), ISAPI protocol, Hikvision SDK, ISAPI management
- Compatible with Hikvision NVR (I-serie), with Terminal Server and with Hikcentral
- FTP picture upload with capture metadata, TCP/IP capture notification, HTTP notification(customization)
- Support up to 5 lists, digital output control based on list events and ISAPI management of lists
- Support context camera management (optional)
- Support linked cam function (with two iDS-TCM) to get context picture less than 300ms delayed than ANPR picture
- Support two streams, and support 20 channels live view at the same time
- Lightning protection, surge protection, voltage transient protection, anti-static protection

Interface

- Support standard 128 G TF card storage
- Support 10M/100M Ethernet port
- Support Alarm I/O (-S)

Security

- Support three-level user authentication management, user and password authorization, and IP address filtering
- Support security certificate as HTTPS
- Lock user IP after certain times failed login attempts

General

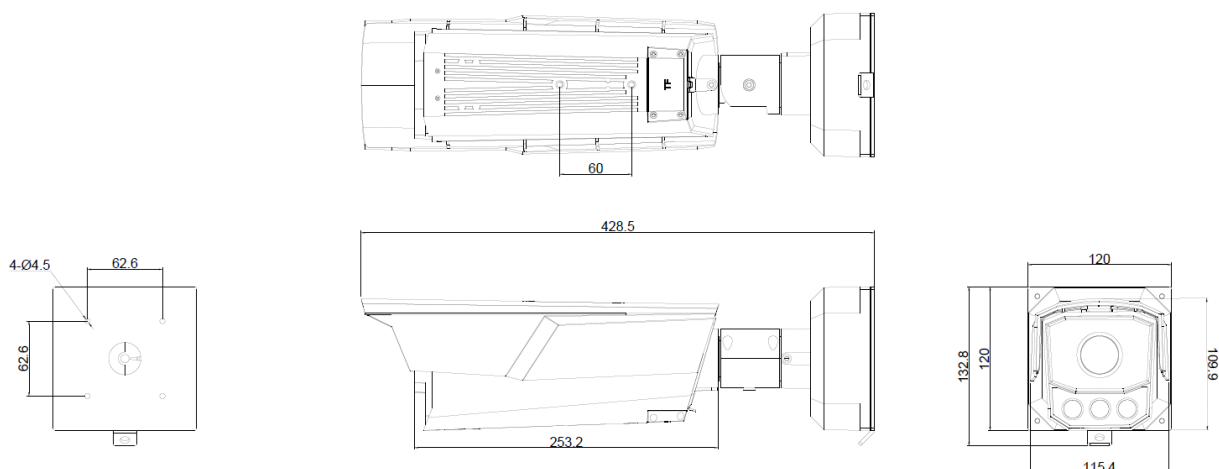
- Vandal proof IK10, Protection index IP67
- Power supply 24VDC, 12VDC, HiPoE (802.03at), PoE (802.03af) with external PoE splitter

Specifications

Camera	
Image Sensor	1/1.8" Progressive Scan CMOS
Min. Illumination	Color: 0.002 Lux @ (F1.2, AGC ON), 0.0027 Lux @ (F1.4, AGC ON), 0 Lux with IR
Shutter Speed	1 s to 1/100,000 s, supports slow shutter
Lens	3.8 mm to 13 mm, F1.4, horizontal field of view: 92° to 32° 8 mm to 32 mm, F1.6, horizontal field of view: 42° to 13.5°
Auto-iris	DC drive
Day & Night	IR cut filter with auto switch
Low sunlight compensation	Auto optimize the picture quality in order to get the license plate capture in case of low sunlight condition and to avoid picture saturation
Digital Noise Reduction	3D DNR
WDR	120dB
Compression Standard	
Video Compression	Main stream: H.264/MPEG4/H.265 Sub stream: H.264/MPEG4/MJPEG/H.265 Third stream: H.264/MPEG4/MJPEG/H.265
H.264 Type	Baseline Profile/Main Profile/High Profile
H.265	Support
Video Bit Rate	32 Kbps to 16 Mbps
Image	
Max. Resolution	1920 × 1080
Main Stream Max. Frame Rate	50Hz: 50fps (1920 × 1080, 1280 × 960, 1280 × 720) 60Hz: 60fps (1920 × 1080, 1280 × 960, 1280 × 720)
Sub Stream Max. Frame Rate	50Hz: 25fps (704 × 576, 640 × 480, 352 × 288) 60Hz: 30fps (704 × 480, 640 × 480, 352 × 240)
Third Stream Max. Frame Rate	50Hz: 25fps (1920 × 1080, 1280 × 960, 1280 × 720, 704 × 576, 640 × 480, 352 × 288) 60Hz: 30fps (1920 × 1080, 1280 × 960, 1280 × 720, 704 × 480, 640 × 480, 352 × 240)
Image Enhancement	BLC /3D DNR/Defog/EIS
Image Setting	Rotate mode, saturation, brightness, contrast, sharpness adjustable by client software or web browser
Region of Interest	Support 4 fixed region for each stream, and dynamic tracking
Target Cropping	Support
Day/Night Switch	Auto/Schedule/Triggered by Alarm In (-S)
Picture Overlay	LOGO picture can be overlaid on video with 128 × 128 24bit bmp format
Road Traffic and Vehicle Detection	
Accuracy	License Plates of Europe and Russian-speaking countries: Capture Rate > 99% Recognition Rate > 98%
Vehicle Speed	8-32mm: Support vehicle speed under 165 km/h (102.5 mi/h) 3.8-13mm: Support vehicle speed under 80 km/h (49.7 mi/h)
Lane number	Support 1 lane detection
Direction	Support capture and recognition of vehicles both approaching and leaving
Whitelist and Blacklist	Up to 50,000 license plate in the list (requires the SD card installed), supports up to 5 lists lists and ISAPI list management
Countries and Regions	Mid-East:

	<p>Turkey, United Arab Emirates, Qatar, Iran, Iraq, Morocco, Egypt, Jordan, Kuwait, Saudi Arabia, Tunisia, Palestine, Pakistan</p> <p>Africa: South Africa, Kenya, Nigeria, Tanzania, Mauritius</p> <p>Asia-Pacific: Australia, Mauritius, New Zealand, Indonesia, Malaysia, Singapore, South Korea, Thailand, Vietnam, the Philippines, Hong Kong, Macao, Taiwan, Burma, Japan, India, Mongolia</p> <p>America: United States of America, Colombia, Brazil, Ecuador, Peru, Mexico</p> <p>Italy: Support all civil license plates in different formats and for different vehicle types including vintage format, Military license plates, Police license plate</p> <p>Europe: Slovakia, Spain, France, Germany, Poland, France, Czech Republic, Netherlands, Denmark, Luxembourg, Greece, Albania, Bosnia and Herzegovina, Ireland, Malta, Sweden, Switzerland, Portugal, Macedonia, Croatia, Finland, United Kingdom, Romania, Serbia, Bulgaria, Norway, Israel, Hungary, Austria, Vatican City State, Cyprus, Iceland, Slovenia, Turkey, Montenegro</p> <p>Russian-Speaking Countries: Azerbaijan, Belarus, Kazakhstan, Lithuania, Georgia, Estonia, Latvia, Armenia, Russian Federation, Ukraine, Moldova, Belarus, Turkmenistan, Uzbekistan</p>
Network	
Network Storage	Support microSD/SDHC/SDXC card (128GB), local storage and NAS (NFS,SMB/CIFS), ANR to buffer the captured picture in case of FTP or TCP transmission
Alarm Trigger	Road traffic, motion detection, video tampering alarm, network disconnected, IP address conflict, illegal login, HDD full, HDD error
Protocols	TCP/IP, ICMP, HTTP, HTTPS, FTP, DHCP, DNS, RTP, RTSP, RTCP, PPPoE, NTP, UPnP, SMTP, SNMP, IGMP, 802.1X, QoS, IPv6
General Function	One-key reset, anti-flicker, three streams, heartbeat, password protection, privacy mask, watermark, IP address filter, mirror
Standard and Compatibility	<p>ONVIF (profile S, profile G), ISAPI, Hikvision SDK, ISAPI management.</p> <p>Compatible with Hikvision NVR (I-serie), Super NVR and with HikCentral.</p> <p>FTP picture upload with capture metadata in multiple modes, TCP/IP capture notification, http notification</p>
Interface	
Communication Interface	1 RJ45 10M/100M Ethernet port
Alarm IO	1 input, 1 output
Serial Port	2 RS-485 ports, 1 RS-232 port
Video Output	1Vp-p composite output (75 Ω/BNC)
On-board storage	Built-in TF Card , up to 128GB
Reset Button	Yes
General	
Power Supply	24Vdc, 12Vdc, Hi-PoE (802.03at), PoE (802.03af) with external PoE splitter
IR	850 nm IR wavelength, up to 50 meters for 3.8 to 13 mm lens, up to 100 m for 8 to 32 mm lens
Heater	Support
Protection	IP67
Impact protection	Vandal proof IK10
Dimensions	120 × 132.8 × 428.5 mm (4.72 × 5.23 × 16.87 inch)
Weight	Approx. 3.12 ± 0.5 kg (6.88 ± 1.1 lb)

Dimensions



Accessories



DS-1275ZJ/HWB
Vertical Pole Mount

Available models

iDS-TCM203-A/3813

iDS-TCM203-A/0832

Pictures Demonstration



Location:Targasystem-back Capture Time:2017-11-07 09:50:55.912 Plate No:EG443WY



7-12-04 17:57:20.543 Plate No:19331



Lane No:02 Capture Time:2017-12-04 18:00:36.146 Plate No:88803 vehicle color:lightblack vehicle type:bus



Capture Time:2018-01-29 14:03:46 Lane No:01 Plate No:6401911

HIKVISION

Headquarters

No.555 Qianmo Road, Binjiang District,
Hangzhou 310051, China
T +86-571-8807-5998
overseasbusiness@hikvision.com

Hikvision USA
T +1-909-895-0400
sales.usa@hikvision.com

Hikvision Italy
T +39-0438-6902
info.it@hikvision.com

Hikvision Singapore
T +65-6684-4718
sg@hikvision.com

Hikvision Africa
T +27 (0) 0351172
sale.africa@hikvision.com

Hikvision Europe
T +31-23-55-42-770
info.eu@hikvision.com

Hikvision France
T +33(0)1-85-330-450
info.fr@hikvision.com

Hikvision Oceania
T +61-2-8599-4233
salesau@hikvision.com

Hikvision Hong Kong
T +852-2151-1761

Hikvision Middle East
T +971-4-8816086
salesme@hikvision.com

Hikvision Spain
T +34-91-737-16-55
info.es@hikvision.com

Hikvision Canada
T +1-909-895-0400
sales.usa@hikvision.com

Hikvision Russia
T +7-495-669-67-99
saleru@hikvision.com

Hikvision Poland
T +48-22-460-01-50
poland@hikvision.com

Hikvision Korea
T +82-31-731-8841
sales.korea@hikvision.com

Hikvision India
T +91-22-28469900
sales@pramahikvision.com

Hikvision UK
T +01628-902140
support.uk@hikvision.com

Hikvision Brazil
T +55 11 3318-0050
Latam.support@hikvision.com

DS-2CD3685G0-IZS

8 MP IR Varifocal Bullet Network Camera



Key Features

- 1/1.8" Progressive Scan CMOS
- 3840 × 2160 @20fps
- H.265, H.265+
- 120dB WDR
- IP67, IK10
- IR range: Up to 60 m
- Junction box included in the package
- BLC/3D DNR/ROI
- Smart encoding: Support low bit rate, low latency
- 4 behavior analyses and face detection
- Color: 0.008 Lux @ (F1.2, AGC ON), 0.011 Lux @ (F1.4, AGC ON)
- Powered by DarkFighter



Specifications

Camera	
Image Sensor	1/1.8" Progressive Scan CMOS
Min. Illumination	Color: 0.008 Lux @ (F1.2, AGC ON), 0.011 Lux @ (F1.4, AGC ON)
Shutter Speed	1/3 s to 1/100,000 s
Slow Shutter	Yes
Day & Night	IR Cut Filter
Digital Noise Reduction	3D DNR
WDR	120dB
3-Axis Adjustment	Pan: 0° to 360°, tilt: 0° to 90°, rotate: 0° to 360°
Lens	
Focal length	2.7 to 13.5 mm
Aperture	F1.4
Focus	Auto
Auto-Iris	DC drive
FOV	Horizontal field of view: 114° to 44° Vertical field of view: 61° to 25° Diagonal field of view: 136° to 50°
Lens Mount	Ø14
IR	
IR Range	Up to 60 m
Wavelength	850nm
Compression Standard	
Video Compression	Main stream: H.265/H.264 Sub-stream: H.265/H.264/MJPEG Third stream: H.265/H.264/MJPEG
H.264 Type	Main Profile/High Profile
H.264+	Main stream supports
H.265 Type	Main Profile
H.265+	Main stream supports
Video Bit Rate	32 Kbps to 16 Mbps
Smart Feature-set	
Smart Event	Line crossing detection, up to 1 line configurable Intrusion detection, up to 1 region configurable Unattended baggage detection, up to 1 region configurable Object removal detection, up to 1 region configurable Face detection: detects faces Scene change detection
Basic Event	Motion detection, video tampering alarm, exception (network disconnected, IP address conflict, illegal login, HDD full, HDD error)
Face Detection	Yes
Linkage Method	Trigger recording: memory card, network storage, pre-record and post-record Trigger captured pictures uploading: FTP, HTTP, NAS, Email Trigger notification: HTTP, ISAPI, alarm output, Email
Region of Interest	5 fixed region for main stream and sub-stream
Image	

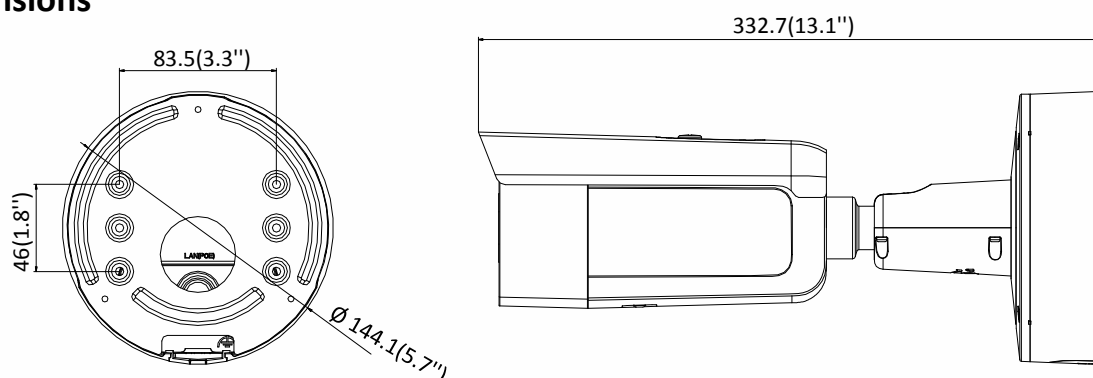
Max. Resolution	3840 × 2160
Main Stream	50Hz: 20 fps (3840 × 2160), 25 fps (3072 × 1728, 2560 × 1440, 1920 × 1080, 1280 × 720) 60Hz: 20 fps (3840 × 2160), 30 fps (3072 × 1728, 2560 × 1440, 1920 × 1080, 1280 × 720)
Sub Stream	50Hz: 25fps (640 × 480, 640 × 360, 320 × 240) 60Hz: 30fps (640 × 480, 640 × 360, 320 × 240)
Third Stream	50Hz: 25fps (1280 × 720, 640 × 360, 352 × 288) 60Hz: 30fps (1280 × 720, 640 × 360, 352 × 240)
Image Enhancement	BLC/3D DNR/HLC
Image Setting	Rotate mode , saturation, brightness, contrast, sharpness, AGC, and white balance are adjustable by client software or web browser
Target Cropping	Yes
Day/Night Switch	Day/Night/Auto/Schedule/Triggered by Alarm In
*Note: When the main stream resolution is 3840 × 2160, max frame rate is 20 fps for all streams.	
Network	
Network Storage	Support Micro SD/SDHC/SDXC card (128G), local storage and NAS (NFS,SMB/CIFS), ANR
Protocols	TCP/IP, UDP, ICMP, HTTP, HTTPS, FTP, DHCP, DNS, DDNS, RTP, RTSP, RTCP, PPPoE, NTP, UPnP, SMTP, SNMP, IGMP, 802.1X, QoS, IPv6, UDP, Bonjour, SSL/TLS
General Function	Anti-flicker, three streams , heartbeat, mirror, privacy masks, password reset via e-mail, pixel counter, HTTP listening
API	ONVIF (PROFILE S, PROFILE G, PROFILE T), ISAPI, SDK, Ehome
Security	Password protection, complicated password, HTTPS encryption, 802.1X authentication (EAP-TLS 1.2, EAP-LEAP, EAP-MD5), watermark, IP address filter, basic and digest authentication for HTTP/HTTPS, WSSE and digest authentication for ONVIF, TLS1.2
Simultaneous Live View	Up to 6 channels
User/Host	Up to 32 users, 3 levels: administrator, operator and user
Client	iVMS-4200, Hik-Connect, Hik-Central
Web Browser	Plug-in required live view: IE8+ Plug-in free live view: Chr2ome 57.0+, Firefox 52.0+, Safari 11+ Local Service: Chrome 41.0+, Firefox 30.0+
Interface	
Audio	1 input (line in, 3.5 mm), 1 output (3.5 mm), mono sound
Communication Interface	1 RJ45 10M/100M self-adaptive Ethernet port
Alarm	1 input, 1 output (max. 12 VDC, 30 mA)
Video Output	1Vp-p composite output (75 Ω/BNC) (For adjustment only)
On-board storage	Built-in micro SD/SDHC/SDXC slot, up to 128 GB
Reset Button	Yes
Audio	
Environment Noise Filtering	Yes
Audio Sampling Rate	8 kHz/16 kHz/32 kHz/44.1 kHz/48 kHz
Audio Compression	G.711/G.722.1/G.726/MP2L2/PCM/MP3
Audio Bit Rate	64Kbps(G.711)/16Kbps(G.722.1)/16Kbps(G.726)/32-192Kbps(MP2L2)/8Kbps-320Kbps(MP3)
General	
Operating Conditions	-30 °C to +60 °C (-22 °F to +140 °F), humidity 95% or less (non-condensing)
Web Client Language	32 languages English, Russian, Estonian, Bulgarian, Hungarian, Greek, German, Italian, Czech, Slovak, French, Polish, Dutch, Portuguese, Spanish, Romanian, Danish, Swedish, Norwegian, Finnish, Croatian, Slovenian, Serbian, Turkish, Korean, Traditional Chinese, Thai, Vietnamese, Japanese, Latvian, Lithuanian, Portuguese (Brazil)
Power Supply	12 VDC ± 25%

	PoE (802.3at, class 4)
Power Consumption and Current	12 VDC, 1.2A, max. 14.5W PoE: (802.3at, 42.5V to 57V), 0.5A to 0.3A, max. 18W
Protection Level	IP67, IK10
Accessory	The junction box is included in the package
Material	Front cover: metal, back cover: metal
Dimensions	Camera: $\Phi 144 \times 332.7$ mm ($\Phi 5.7" \times 13.1"$)
Weight	Camera: 1400 g (3.1 lb.) With package: 2500 g (5.5 lb.)

Available Model:

DS-2CD3685G0-IZS (2.7 to 13.5 mm)

Dimensions



Unit: mm(inch)

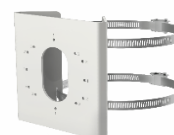
Accessories



DS-1475ZJ-SUS
Vertical Pole Mount



DS-1476ZJ-SUS
Corner Mount



DS-1275ZJ-S-SUS
Vertical Pole Mount

Distributed by



HIKVISION®

Headquarters

No.555 Qianmo Road, Binjiang District,
Hangzhou 310051, China
T +86-571-8807-5998
overseasbusiness@hikvision.com

Hikvision USA
T +1-909-895-0400
sales.usa@hikvision.com

Hikvision Italy
T +39-0438-6902
info.it@hikvision.com

Hikvision Singapore
T +65-6684-4718
sg@hikvision.com

Hikvision Africa
T +27 (0) 0351172
sale.africa@hikvision.com

Hikvision Europe
T +31-23-55-42-770
info.eu@hikvision.com

Hikvision France
T +33(0)1-85-330-450
info.fr@hikvision.com

Hikvision Oceania
T +61-2-8599-4233
salesau@hikvision.com

Hikvision Hong Kong
T +852-2151-1761

Hikvision Middle East
T +971-4-8816086
salesme@hikvision.com

Hikvision Spain
T +34-91-737-16-55
info.es@hikvision.com

Hikvision Canada
T +1-909-895-0400
sales.usa@hikvision.com

Hikvision Russia
T +7-495-669-67-99
saleru@hikvision.com

Hikvision Poland
T +48-22-460-01-50
poland@hikvision.com

Hikvision Korea
T +82-31-731-8841
sales.korea@hikvision.com

Hikvision India
T +91-22-28469900
sales@pramahikvision.com

Hikvision UK
T +01628-902140
support.uk@hikvision.com

Hikvision Brazil
T +55 11 3318-0050
Latam.support@hikvision.com

POWEREDGE R540

Built for versatility

The PowerEdge R540 delivers the ideal balance of resources and affordability to adapt to a variety of application demands.



Power your applications with the versatility of the R540

The PowerEdge R540 delivers the versatility and flexibility to power a variety of applications. With a balanced set of resources, expandability and affordability the R540 adapts to the demands of the modern data center with the ideal value optimized design. Automatically optimize performance with one button application tuning and scale for future demands with up to 14 3.5" drives.

- Scale compute resources with 2nd Generation Intel® Xeon® Scalable processors, and tailor performance based on your unique workload requirements.
- Automatically optimize application performance with one-button tuning.
- Flexible storage with up to 14 3.5" drives.
- Free up storage with boot optimized M.2 SSDs.

Intuitive systems management with intelligent automation

Dell EMC PowerEdge servers are optimized for top efficiency and uptime, with intelligent automation that decreases time spent on the most common IT tasks. Combined with the agent-free management of the embedded iDRAC with Lifecycle Controller, the R540 is easily and effectively managed.

- Simplify data center management with OpenManage Essentials to intelligently automate the entire server life cycle management process – from bare-metal deployment, through configuration and updates, to ongoing maintenance.
- Use the OpenManage Mobile app to take advantage of new wireless Quick Sync 2 capabilities to efficiently perform management procedures at-the-server, across multiple servers within the data center, or monitor server status and respond to alerts, anytime, anywhere.

Rely on PowerEdge with built-in security

Every PowerEdge server is made with a cyber-resilient architecture, building security into all parts of a server's life cycle. The R540 uses these new security features so you can reliably and securely deliver the right data to where your customers are, no matter where they are. Dell EMC considers each part of system security, from design to end of life, to ensure trust and deliver worry-free, secure systems.

- Rely on a secure supply chain that protects servers from factory to the data center.
- Maintain data safety with cryptographically signed firmware packages and Secure Boot.
- Prevent unauthorized or malicious change with Server Lockdown.
- Wipe all data from storage media including hard drives, SSDs and system memory quickly and securely with System Erase.

PowerEdge R540

- 2U, 2 socket server
- Up to 14 3.5" drives, max 196TBs
- Internal M.2 boot drives

PowerEdge R540

Features	Technical Specification	
Processor	Up to two 2 nd Generation Intel® Xeon® Scalable processors, up to 20 cores per processor	
Memory	16 DDR4 DIMM slots, Supports RDIMM /LRDIMM, speeds up to 2666MT/s, 1TB max ¹	
Storage controllers	Internal controllers: PERC H330, H730P, H740P, HBA330, Software RAID (SWRAID) S140 Boot Optimized Storage Subsystem: HWRAID 2 x M.2 SSDs 120GB, 240 GB External PERC (RAID): H840 External HBAs (non-RAID): 12 Gbps SAS HBA	
Drive bays	Front drive bays: Up to 12 x 3.5" SAS/SATA HDD max 168TB Rear drive bays: Up to 2 x 3.5 SAS/SATA HDD max 28TB Optional DVD-ROM, DVD+RW	
Power supplies	Platinum 495W, 750W, 750W 240V HVDC ² , 1100W, 1100W 380V HVDC ² Hot plug power supplies with full redundancy option	
Fans	Up to six fans	
Sizing	Form factor: Rack (2U)	Height: 86.8mm (3.41") Width*: 434mm (17.08") Depth*: 693.81mm (27.31") Weight: 29.68kg (65.43lbs.) *Dimensions do not include bezel.
Bezel	Optional LCD or security bezel	
Embedded / At-Server	iDRAC9 iDRAC Direct	iDRAC REST API with Redfish Quick Sync 2 BLE/wireless module
Consoles & Mobile	OpenManage Enterprise OpenManage Essentials	OpenManage Mobile OpenManage Power Center
Integrations	OpenManage integrations: Microsoft® System Center, VMware® vCenter™, BMC Truesight, Red Hat® Ansible® Modules	
Connections	Nagios® Core and Nagios® XI, IBM Tivoli® Netcool/OMNibus Micro Focus Operations Manager I	
Tools	Dell EMC Repository Manager Dell EMC Update Package Dell EMC System Update Dell EMC Server Update Utility	iDRAC Service Module OpenManage Server Administrator OpenManage Storage Services
Security	TPM 1.2/2.0, TCM 2.0 optional Cryptographically signed firmware Silicon Root of Trust	Secure Boot System Lockdown (requires OpenManage Enterprise) System Erase
I/O & Ports	Network options: 2 x 1GbE LOM + (optional) LOM Riser 2 x 1GbE or 2 x 10GbE SFP+ or 2 x 10GbE BaseT Front ports: 1 x Dedicated iDRAC Direct USB, 1 x USB 2.0, 1 x Video Rear ports: 1 x Dedicated iDRAC network port, 1 x Serial, 2 x USB 3.0, 1 x Video With Optional Riser: Non-rear storage config: 1x FH/FL + 1x HH/HL (2U Right riser) slots + 3 HH/HL slots Rear storage config: 1x HH/HL (1U Left Riser) + 1x HH/HL (1U Right risers) slot or 1x HH/HL (1U Left Riser) + 1x FH/HL (1U Right riser)	
Supported operating systems	Canonical® Ubuntu® Server LTS Citrix® Hypervisor Microsoft Windows Server® LTSC with Hyper-V Red Hat® Enterprise Linux SUSE® Linux Enterprise Server VMware® ESXi	For specifications and interoperability details, see Dell.com/OSsupport .
OEM-ready version available	From bezel to BIOS to packaging, your servers can look and feel as if they were designed and built by you. For more information, visit Dell.com/OEM .	
Dell Financial Services	Deliver results with easy financing. Explore financial options that move at the speed of business. For more information, visit https://www.emc.com/products/how-to-buy/global-financial-services/index.htm .*	
Recommended support and services	Choose Dell ProSupport Plus for critical systems or Dell ProSupport for premium hardware and software support for your PowerEdge solution. Consulting and deployment offerings are also available. Contact your Dell representative today for more information. Availability and terms of Dell Services vary by region. For more information, visit dell.com/itlifecycleservices .	
Dell Financial Services	Deliver results with easy financing. Explore financial options that move at the speed of business. For more information, visit https://www.emc.com/products/how-to-buy/global-financial-services/index.htm .*	

¹ 768GB max memory is recommended for performance optimized configurations

² Available in China only

Learn more at [Dell.com/PowerEdge](https://www.dell.com/poweredge)

End-to-end technology solutions

Reduce IT complexity, lower costs and eliminate inefficiencies by making IT and business solutions work harder for you. You can count on Dell EMC for end-to-end solutions to maximize your performance and uptime. A proven leader in Servers, Storage and Networking, Dell EMC Services deliver innovation at any scale. And if you're looking to preserve cash or increase operational efficiency, Dell Financial Services™ has a wide range of options to make technology acquisition easy and affordable. Contact your Dell Sales Representative for more information.*

* Payment solutions provided and serviced by Dell Financial Services L.L.C. or its affiliate or designee ("DFS") for qualified customers. Offers may not be available or may vary in certain countries. Where available, offers may be changed without notice and are subject to product availability, credit approval, execution of documentation provided by and acceptable to DFS, and may be subject to minimum transaction size. Offers not available for personal, family or household use. Product availability may vary by region. Please contact your Dell EMC representative for more information. Dell and the Dell logo are trademarks of Dell Inc. Restrictions and additional requirements may apply to transactions with governmental or public entities.

Copyright © April 18, 2019 Dell Inc. or its subsidiaries. All Rights Reserved.

DELLEMC